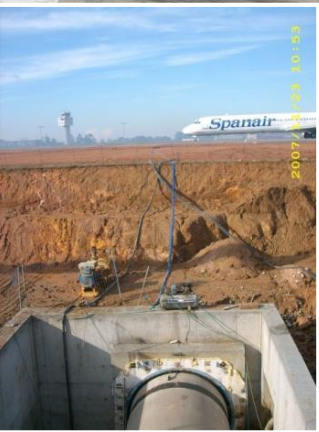


150 m

Sewer crossing for Vigo airport
150 m in Granite.
Hydroshield DN2500.
Continues precise surveying
measurements with no settlement
measured detected.

© 2008 Tele Atlas



- CLAY
- SAND
- BOULDERS
- ROCK
- UNDER WATER LEVEL
- GEOTECHNICAL CHARACTERISTICS

- ROAD
- TRAIN
- AIRPORT
- CITY
- OUTFALL
- MOUNTAIN
- CURVE
- CROSSINGS CHARACTERISTICS